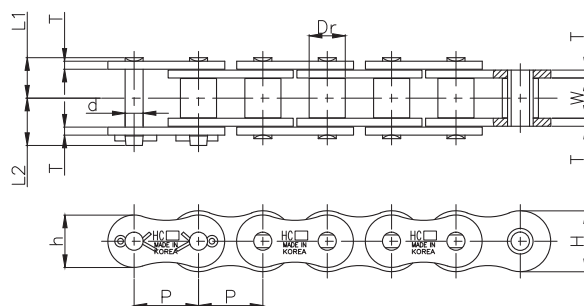
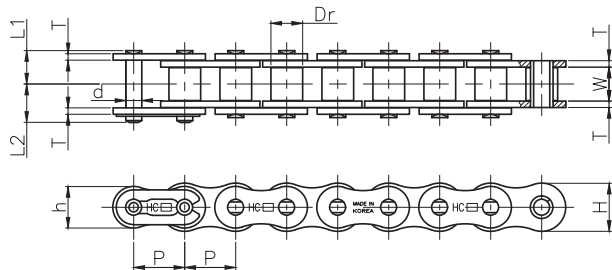


표준 롤러 체인 (단열)

ANSI STANDARD ROLLER CHAIN (SINGLE STRAND)

HC표준형 롤러체인은 KS규격 및 ANSI규격에 준하여 생산하고 있습니다.

THE HC STANDARD ROLLER CHAINS are in conformity with KS (KOREA STANDARD) AND ANSI (American National Standard Institute) standards.



(단위 UNIT : mm)

체인번호 Chain No.	피치 Pitch P	롤러 링크너폭 Roller Link Width W	롤러 외경 Roller Outer Dia. Dr	핀 Pin			링크 플레이트 Link Plate			최소 인장강도 Minimum Tensile Strength KN(kg.f)	최대 허용장력 Maximum Allowable Tension KN(kg.f)	개략 중량 Approx. Weight (kg/m)	
				직경 Dia d	길이 Length		두께 Thickness T	높이 Height					
					L ₁ +L ₂	L ₁		L ₂	H				h
HC 25	6.35	3.18	3.30	2.31	8.45	3.82	4.63	0.8	6.0	5.2	3.7 (380)	0.64 (65)	0.14
HC 35	9.525	4.78	5.09	3.59	13.10	5.90	7.20	1.3	9.0	7.8	8.8 (900)	2.16 (220)	0.33
HC 40	12.70	7.95	7.94	3.97	17.45	8.20	9.25	1.5	12.0	10.4	15.7 (1,600)	3.63 (370)	0.66
HC 50	15.875	9.53	10.16	5.09	22.15	10.30	11.85	2.0	15.0	13.0	24.5 (2,500)	6.37 (650)	1.20
HC 60	19.05	12.70	11.91	5.96	27.30	12.75	14.55	2.4	18.1	15.6	34.3 (3,500)	8.83 (900)	1.65
HC 80	25.40	15.88	15.88	7.94	36.15	16.25	19.90	3.2	24.1	20.8	61.3 (6,250)	14.7 (1,500)	2.80
HC 100	31.75	19.05	19.05	9.54	43.50	19.80	23.70	4.0	30.1	26.0	95.6 (9,750)	22.6 (2,300)	4.30
HC 120	38.10	25.40	22.23	11.11	54.25	25.15	29.10	4.8	36.2	31.2	137.3 (14,000)	30.4 (3,100)	6.00
HC 140	44.45	25.40	25.40	12.71	58.75	27.10	31.65	5.6	42.2	36.4	186.3 (19,000)	40.2 (4,100)	7.60
HC 160	50.80	31.75	28.58	14.29	69.35	32.10	37.25	6.4	48.2	41.6	245.1 (25,000)	53 (5,400)	10.20
HC 180	57.15	35.72	35.71	17.46	79.50	36.20	43.30	7.2	54.2	46.7	308.9 (31,500)	60.8 (6,200)	13.50
HC 200	63.50	38.10	39.69	19.85	86.55	39.35	47.20	8.0	60.3	52.0	382.4 (39,000)	71.6 (7,300)	17.10
HC 240	76.20	47.63	47.63	23.81	103.85	48.15	55.70	9.5	72.4	62.4	551.1 (56,200)	99 (10,100)	24.50

* 피로강도는 최대허용장력과 동일합니다. Fatigue strength is same as Maximum Allowable Tension

▶ 체인 핀 형식

