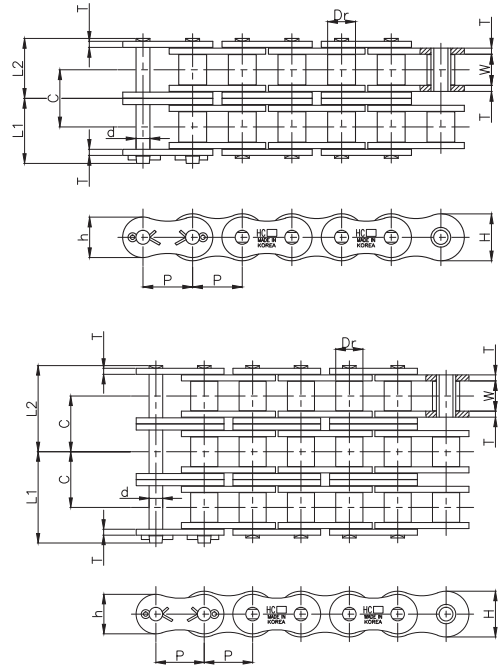


표준 롤러 체인 (복열)

ANSI STANDARD ROLLER CHAIN (MULTIPLE STRAND)



(단위 UNIT : mm)

체인번호 Chain No.	피치 Pitch P	롤러 링크너폭 Roller Link Width W	롤러 외경 Roller Outer Dia. Dr	핀 Pin			링크 플레이트 Link Plate			횡피치 Transverse Pitch C	최소 인장강도 Minimum Tensile Strength KN(kg.f)	최대 허용장력 Maximum Allowable Tension KN(kg.f)	
				직경 Dia d	길이 Length		두께 Thickness T	높이 Height					
					L ₁ +L ₂	L ₁		L ₂	H				h
HC 25-2	6.35	3.18	32.80	2.31	14.85	7.02	7.83	0.75	6.0	5.2	6.4	7.4(760)	1.08(110)
HC 35-2	9.525	4.78	5.08	3.59	23.20	10.95	12.25	1.25	9.0	7.8	10.1	17.6(1800)	3.63(370)
HC 40-2	12.70	7.95	7.94	3.97	31.85	15.40	16.45	1.5	12.0	10.4	14.4	31.4(3,200)	6.18(630)
HC 50-2	15.875	9.53	10.16	5.09	40.25	19.35	20.90	2.0	15.0	13.0	18.1	49.0(5,000)	10.7(1,100)
HC 60-2	19.05	12.70	11.91	5.96	50.10	24.15	25.95	2.4	18.1	15.6	22.8	68.6(7,000)	15(1,530)
HC 80-2	25.40	15.88	15.88	7.94	65.40	30.90	34.50	3.2	24.1	20.8	29.3	122.6(12,500)	25(2,550)
HC 100-2	31.75	19.05	19.05	9.54	79.20	37.70	41.50	4.0	30.1	26.0	35.8	191.2(19,500)	38.3(3,910)
HC 120-2	38.10	25.40	22.23	11.11	99.40	47.60	51.80	4.8	36.2	31.2	45.4	274.5(28,000)	51.7(5,270)
HC 140-2	44.45	25.40	25.40	12.71	107.75	51.65	56.10	5.6	42.2	36.4	48.9	372.6(38,000)	68.4(6,970)
HC 160-2	50.80	31.75	28.58	14.29	127.60	61.10	66.50	6.3	48.2	41.6	58.5	490.3(50,000)	90(9,180)
HC 180-2	57.15	35.72	35.71	17.46	145.40	69.10	76.30	7.2	54.2	46.7	65.8	617.8(63,000)	103(10,540)
HC 200-2	63.50	38.10	39.69	19.85	157.90	74.90	83.00	7.9	60.3	52.0	71.6	764.9(78,000)	122(12,410)
HC 240-2	76.20	47.63	47.63	23.81	191.40	91.80	99.60	9.5	72.4	62.4	87.8	1102.2(112,400)	168(17,170)
HC 25-3	6.35	3.18	3.28	2.31	21.25	10.22	11.03	0.75	6.0	5.2	6.4	11.1(1,140)	1.57(160)
HC 35-3	9.525	4.78	5.08	3.59	83.30	16.00	17.30	1.25	9.0	7.8	10.1	26.4(2,700)	5.39(550)
HC 40-3	12.70	7.95	7.94	3.97	46.25	22.60	23.65	1.5	12.0	10.4	14.4	47.0(4,800)	9.12(930)
HC 50-3	15.875	9.53	10.16	5.09	58.35	28.40	29.95	2.0	15.0	13.0	18.1	73.5(7,500)	16(1,630)
HC 60-3	19.05	12.70	11.91	5.96	72.90	35.55	37.35	2.4	18.1	15.6	22.8	102.9(10,500)	22.1(2,250)
HC 80-3	25.40	15.88	15.88	7.94	94.70	45.55	49.15	3.2	24.1	20.8	29.3	183.8(18,750)	36.8(3,750)
HC 100-3	31.75	19.05	19.05	9.54	115.00	55.60	59.40	4.0	30.1	26.0	35.8	286.8(29,250)	56.4(5,760)
HC 120-3	38.10	25.40	22.23	11.11	144.80	70.30	74.50	4.8	36.2	31.2	45.4	411.8(42,000)	76(7,750)
HC 140-3	44.45	25.40	25.40	12.71	156.65	76.05	80.60	5.6	42.2	36.4	48.9	559(57,000)	101(10,250)
HC 160-3	50.80	31.75	28.58	14.29	186.10	90.35	97.57	6.3	48.2	41.6	58.5	735.5(75,000)	132(13,500)
HC 180-3	57.15	35.72	35.71	17.46	211.24	102.07	109.17	7.2	54.2	46.7	65.8	926.7(94,500)	152(15,500)
HC 200-3	63.50	38.10	39.69	19.85	229.50	110.70	118.80	7.9	60.3	52.0	71.6	1147.3(117,000)	179(18,250)
HC 240-3	76.20	47.63	47.63	23.81	279.20	135.70	143.50	9.5	72.4	62.4	87.8	1653.4(168,600)	248(25,250)

* 4열, 5열, 6열등 다열체인도 생산하고 있습니다.

* 피로강도는 최대허용장력과 동일합니다.

* 다열계수 2열:1.7 3열:2.5 4열:3.3 5열:3.9 6열:4.6

* 최대 허용장력은 다열계수가 반영된 값입니다.

Multi Strands(4, 5, 6) are available also

Fatigue strength are same as Maximum Allowable Tension

Multiple Strand Factor 2 Strand: 1.7 / 3 Strand: 2.5 / 4 Strands: 3.3 / 5 Strand: 3.9 / 6 Strand: 4.6

Maximum Allowable Tension is the value after reflecting Multiple Strand Factor