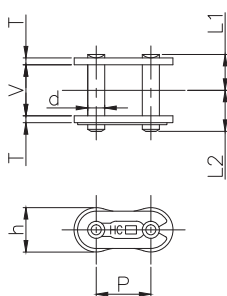
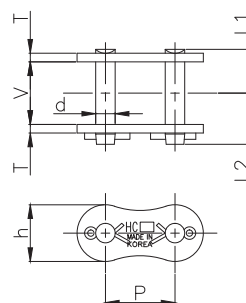


표준 조인트 링크 (C/L)

ANSI STANDARD CONNECTING(JOINT) LINK (C/L)



클립핀형 조인트 링크
Spring Clip Type Connecting(Joint) Link



코타핀형 조인트 링크
Cotter Pin Type Connecting(Joint) Link

(단위 UNIT : mm)

체인번호 Chain No.	피치 Pitch P	롤러 링크너폭 Roller Link Width V	핀 Pin			링크 플레이트 Link Plate		횡피치 Transverse Pitch C	핀형식 Pin Type
			직경 Dia d	길이 Length		두께 Thickness T	높이 Height h		
				L ₁	L ₂				
HC 25	6.35	4.84	2.31	3.82	4.63	0.75	5.2	6.4	클립핀형 Clip Pin Type
HC 35	9.525	7.52	3.59	5.90	7.20	1.25	7.8	10.1	"
HC 41	12.70	9.15	3.59	6.70	7.80	1.25	8.1	-	"
HC 40	12.70	11.23	3.97	8.20	9.25	1.5	10.4	14.4	"
HC 50	15.875	13.90	5.09	10.30	11.85	2.0	13.0	18.1	"
HC 60	19.05	17.81	5.96	12.75	14.55	2.4	15.6	22.8	"
HC 80	25.40	22.66	7.94	16.25	19.90	3.2	20.8	29.3	코타핀형 Cotter Pin Type
HC 100	31.75	27.51	9.54	19.80	23.70	4.0	26.0	35.8	"
HC 120	38.10	35.51	11.11	25.15	29.10	4.8	31.2	45.4	"
HC 140	44.45	37.24	12.71	27.10	31.65	5.6	36.4	48.9	"
HC 160	50.80	45.27	14.29	32.10	37.25	6.3	41.6	58.5	"
HC 180	57.15	50.94	17.46	36.20	43.30	7.2	46.07	65.8	"
HC 200	63.50	59.94	19.85	39.35	47.20	7.9	52.0	71.6	"
HC 240	76.20	67.87	23.81	48.15	55.70	9.5	62.4	87.8	"



클립핀형 Clip Pin Type



코타핀형 Cotter Pin Type