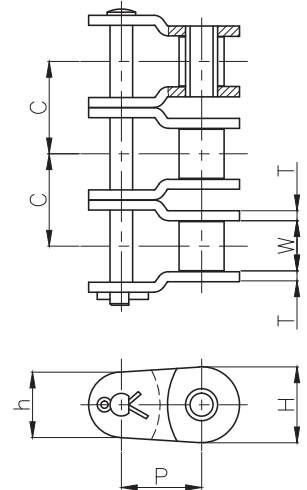
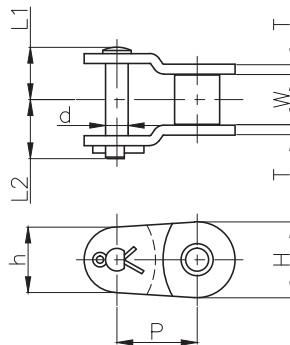
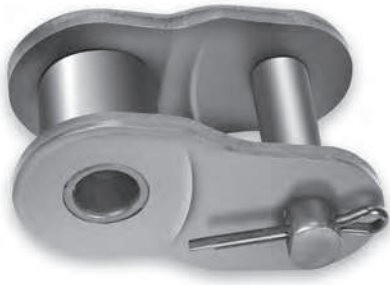


표준 오프셋 링크 (O/L)

ANSI STANDARD OFFSET LINK (O/L)

오프셋링크(O/L)이 적용된 체인은 최대허용장력이 65% 수준으로 변경됨.

When using OFFSET LINK (O/L), Maximum allowable load of chain is changed by 65%.



(단위 UNIT : mm)

체인번호 Chain No.	피치 Pitch P	롤러 외경 Roller Outer Dia. Dr	롤러 링크내폭 Roller Link Width W	핀 Pin			링크 플레이트 Link Plate			횡피치 Transverse Pitch C
				직경 Dia d	길이 Length		두께 Thickness T	높이 Height		
					L ₁	L ₂		H	h	
HC 25	6.35	3.30	3.18	2.31	3.80	4.80	0.75	5.84	5.05	6.4
HC 35	9.525	5.08	4.78	3.59	5.85	7.65	1.25	9.0	7.8	10.1
HC 41	12.70	7.77	6.38	3.59	6.65	9.35	1.25	9.7	8.1	-
HC 40	12.70	7.94	7.95	3.97	8.25	10.25	1.50	12.0	10.4	14.4
HC 50	15.875	10.16	9.53	5.09	10.30	11.85	2.00	15.0	13.0	18.1
HC 60	19.05	11.91	12.70	5.96	12.75	14.25	2.40	18.1	15.6	22.8
HC 80	25.40	15.88	15.88	7.94	16.25	19.90	3.20	24.1	20.8	29.3
HC 100	31.75	19.05	15.88	9.54	19.80	23.70	4.00	30.1	26.0	35.8
HC 120	38.10	22.23	25.40	11.11	25.50	29.20	4.80	36.2	31.2	45.4
HC 140	44.45	25.40	25.40	12.71	27.85	31.65	5.60	42.2	36.4	48.9
HC 160	50.80	28.58	31.75	14.29	33.25	37.25	6.30	48.2	41.6	58.5
HC 180	57.15	35.71	35.72	17.46	38.00	43.30	7.20	54.2	46.8	65.8
HC 200	63.50	39.69	38.10	19.85	41.80	47.20	7.90	60.3	52.0	71.6
HC 240	76.20	47.63	47.63	23.81	50.90	55.70	9.50	72.4	62.4	87.8



1피치 오프셋링크 One Offset Link



2피치 오프셋링크 Two Offset Link