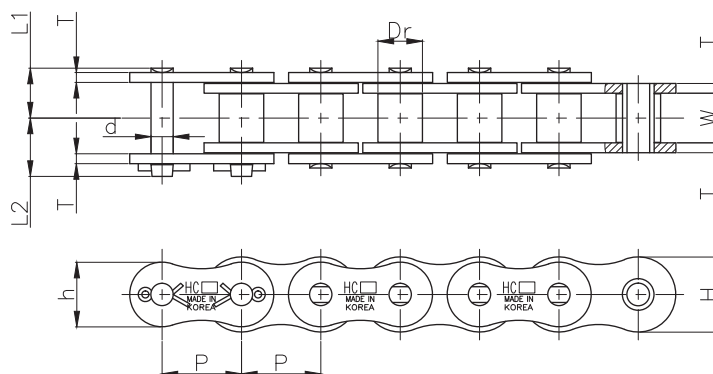


BS규격 롤러 체인 (단열)

BS STANDARD ROLLER CHAIN (SINGLE STRAND)



(단위 UNIT : mm)

체인번호 Chain No.	피치 Pitch P	링크 플레이트 내폭 Link Plate Width W (MIN)	롤러 외경 Roller Outer Dia. R (MAX)	핀 Pin			링크 플레이트 Link Plate				최소 인장강도 Minimum Tensile Strength KN(kgf)	개략 중량 Approx. Weight kg/m	
				직경 Dia d (MAX)	길이 Length		두께 Thickness		높이 Height				
					L ₁	L ₂	L ₁ +L ₂	T	t	H			h
HC 06B	9.525	5.72	6.35	3.28	6.7	10.1	16.8	1.3	1.3	8.26	8.26	8.92(910)	0.41
HC 08B	12.7	7.75	8.51	4.45	8.5	9.5	18.0	1.5	1.5	11.81	10.92	17.8(1,820)	0.7
HC 10B	15.875	9.65	10.16	5.08	9.8	10.7	20.5	1.5	1.5	14.73	13.72	22.2(2,270)	0.95
HC 12B	19.05	11.68	12.07	5.72	11.35	12.15	23.5	1.8	1.8	16.13	16.13	28.9(2,950)	1.25
HC 16B	25.4	17.02	15.88	8.28	18.05	20.85	38.9	4.0	3.0	21.08	21.08	42.2(4,310)	2.7
HC 20B	31.75	19.56	19.05	10.19	21.1	24.2	45.3	4.5	3.5	26.42	26.42	64.5(6,580)	3.6
HC 24B	38.1	25.4	25.4	14.63	27.4	31.8	60.2	6.0	5.0	33.4	33.4	97.8(9,980)	6.7
HC 28B	44.45	30.99	27.94	15.9	33.0	37.4	70.4	7.0	6.0	37.08	37.08	129(13,160)	8.3
HC 32B	50.8	30.99	29.21	17.81	33.0	39.0	72.0	7.0	6.0	42.29	42.29	169(17,240)	10.5
HC 40B	63.5	38.1	39.37	22.89	35.35	58.65	94.0	8.0	8.0	52.96	52.96	262.5(26,770)	16.0
HC 48B	76.2	45.72	48.26	29.24	50.3	69.7	120.0	12.0	10.0	63.88	63.88	400.4(40,830)	25.0
HC 56B	88.9	53.34	53.98	34.32	58.5	78.5	137.0	13.0	12.0	77.85	77.85	542.7(55,340)	35.0
HC 64B	101.6	60.96	63.5	39.4	65.7	89.3	150.0	14.0	13.0	90.17	90.17	1095.2(111,680)	70.0
HC 72B	114.3	68.58	72.39	44.48	74.35	98.65	173.0	17.0	15.0	103.63	103.63	1600(163,160)	105.0