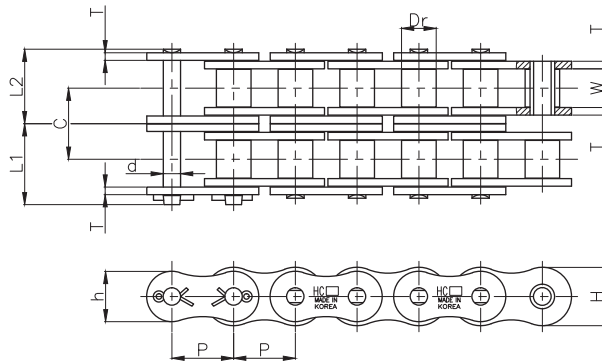


BS규격 롤러 체인 (복열)

BS STANDARD ROLLER CHAIN (DOUBLE STRAND)



(단위 UNIT : mm)

체인번호 Chain No.	피치 Pitch P	링크 플레이트 내폭 Link Plate Width W (MIN)	롤러 외경 Outer Dia. R (MAX)	핀 Pin			링크 플레이트 Link Plate				횡피치 Transverse Pitch C	최소 인장강도 Minimum Tensile Strength KN(kgf)	개략 중량 Approx. Weight kg/m	
				직경 Dia d (MAX)	길이 Length		두께 Thickness		높이 Height					
					L ₁	L ₂	L ₁ +L ₂	T	t	H				h
HC 06B-2	9.525	5.72	6.35	3.28	11.25	12.55	23.80	1.3	1.3	8.26	8.26	10.24	16.9(1,730)	0.78
HC 08B-2	12.7	7.75	8.51	4.45	15.50	16.40	31.90	1.5	1.5	11.81	10.92	13.92	31.2(3,180)	1.35
HC 10B-2	15.875	9.65	10.16	5.08	18.10	19.0	37.10	1.5	1.5	14.73	13.72	16.59	44.5(4,540)	1.35
HC 12B-2	19.05	11.68	12.07	5.72	21.10	21.90	43.00	1.8	1.8	16.13	16.13	19.46	57.8(5,900)	2.50
HC 16B-2	25.4	17.02	15.88	8.28	34.0	36.80	70.80	4.0	3.0	21.08	21.08	31.88	84.5(8,620)	5.40
HC 20B-2	31.75	19.56	19.05	10.19	39.40	42.40	81.80	4.5	3.5	26.42	26.42	36.45	129(13,160)	7.20
HC 24B-2	38.1	25.4	25.4	14.63	51.60	56.0	107.60	6.0	5.0	33.4	33.4	48.36	195.7(19,960)	13.50
HC 28B-2	44.45	30.99	27.94	15.9	62.85	67.15	130.00	7.0	6.0	37.08	37.08	59.56	258.1(26,320)	16.60
HC 32B-2	50.8	30.99	29.21	17.81	62.35	68.35	130.60	7.0	6.0	42.29	42.29	58.55	338.1(34,480)	21.0
HC 40B-2	63.5	38.1	39.37	22.89	76.55	89.75	166.30	8.0	8.0	52.96	52.96	72.29	525(53,540)	32.0
HC 48B-2	76.2	45.72	48.26	29.24	95.95	115.35	211.30	12.0	10.0	63.88	63.88	91.21	800.7(81,650)	50.0
HC 56B-2	88.9	53.34	53.98	34.32	111.50	132.10	243.60	13.0	12.0	77.85	77.85	106.60	1085.4(110,680)	70.0
HC 64B-2	101.6	60.96	63.5	39.4	125.70	149.20	274.90	14.0	13.0	90.17	90.17	119.89	1423.4(145,150)	120.0
HC 72B-2	114.3	68.58	72.39	44.48	142.55	166.75	309.30	17.0	15.0	103.63	103.63	136.27	1797.1(183,260)	160.0