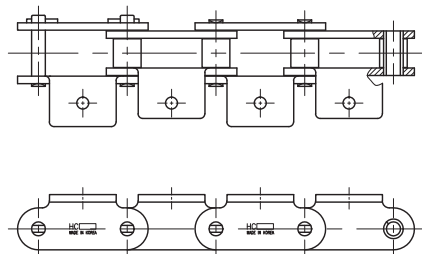


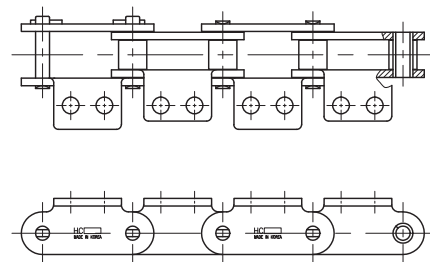
# 어태치먼트 체인 (더블피치형)

## ATTACHMENT CHAIN (DOUBLE PITCH TYPE)

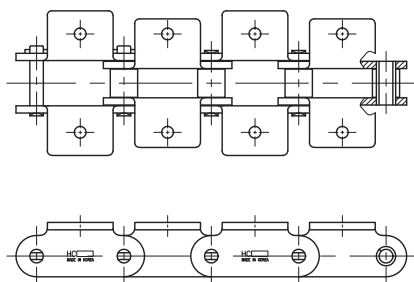
A-1 어태치먼트 ATTACHMENT



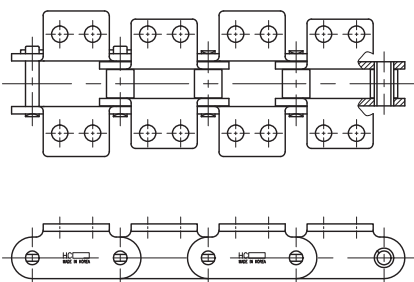
A-2 어태치먼트 ATTACHMENT



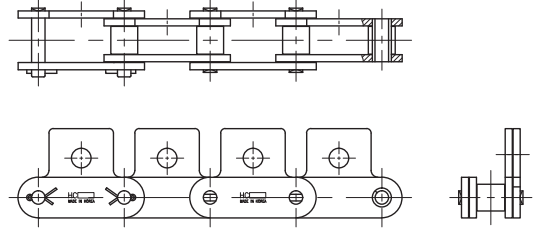
K-1 어태치먼트 ATTACHMENT



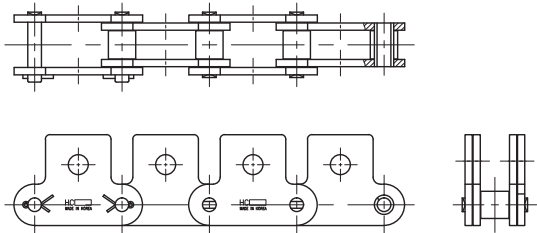
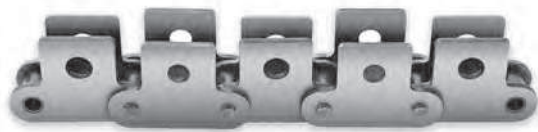
K-2 어태치먼트 ATTACHMENT



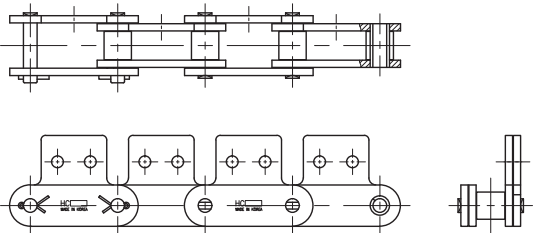
SA-1 어태치먼트 ATTACHMENT



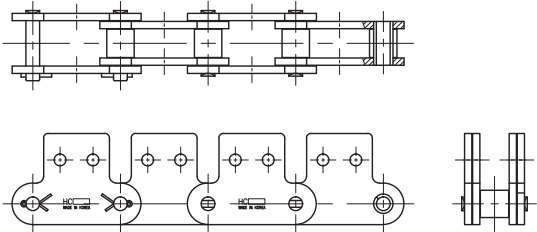
SK-1 어태치먼트 ATTACHMENT



SA-2 어태치먼트 ATTACHMENT



SK-2 어태치먼트 ATTACHMENT



(단위 UNIT : mm)

체인번호 Chain No.	피치 Pitch	P	C	C <sub>1</sub>	C <sub>2</sub>	K	N	O	O <sub>1</sub>	S	T	X	X <sub>2</sub>	X <sub>S</sub>	어태치 1EA당부가중량 (kg/EA) Additional WT for 1EA Attachment	
															A · SA 어태치 A·SA Attachment	K · SK 어태치 K·SK Attachment
HC 2040(S) HC 2042(R)	25.40	12.7	11.1	13.6	9.5	19.1	3.6	5.2	9.1	1.5	19.3	17.6	19.8	0.003	0.006	
HC 2050(S) HC 2052(R)	31.75	15.9	14.3	15.9	11.9	23.8	5.2	6.8	11.1	2.0	24.2	22.0	24.6	0.006	0.012	
HC 2060(S) HC 2062(R)	38.10	21.45	17.5	19.1	14.3	28.6	5.2	8.7	14.7	3.2	31.5	28.2	30.6	0.017	0.034	
HC 2080(S) HC 2082(R)	50.80	27.8	22.2	25.4	19.1	38.1	6.8	10.3	19.1	4.0	40.7	36.6	40.5	0.037	0.074	
HC 2100(S) HC 2102(R)	63.50	33.35	28.6	31.8	23.8	47.6	8.7	14.3	23.4	4.8	49.9	44.9	50.4	0.067	0.134	
HC 2120(S) HC 2122(R)	76.20	39.7	33.3	37.3	28.6	57.2	14	16	27.8	5.6	60.7	54.4	60.3	0.100	0.200	
HC 2160(S) HC 2162(R)	101.60	52.4	44.5	50.8	38.1	76.2	18	22	36.5	7.2	77.8	70.0	78.6	0.213	0.426	

주 1) 그림은 S롤러형이나 R롤러형도 어태치먼트의 치수는 동일합니다. The dimensions of S and R roller type are same