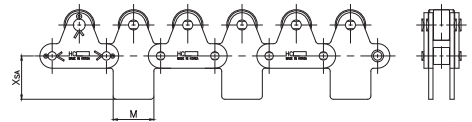


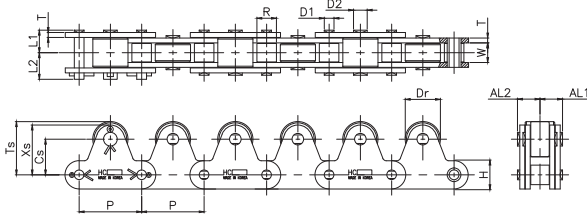
톱 롤러 체인 (더블피치형)

TOP ROLLER CHAIN (DOUBLE PITCH TYPE)

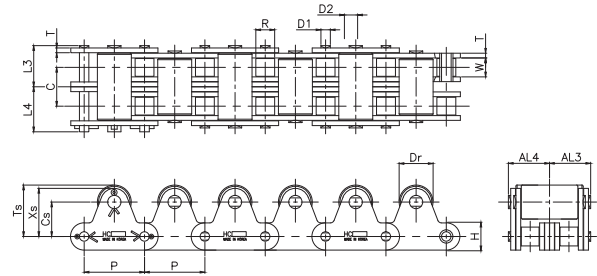
(가이드형 GUIDE TYPE)



(1열형 SINGLE STRAND)



(2열형 DOUBLE STRAND)



(단위 UNIT : mm)

체인번호 Chain No.	피치 Pitch P	롤러 링크너폭 Roller Link Width W	롤러 외경 Roller Outer Dia.		직경 Dia D	핀 Pin				링크 플레이트 Link Plate		횡피치 Transverse Pitch C	평균 인장강도 Average Tensile Strength KN(kg.f)	최대 허용장력 Maximum Allowable Tension KN(kg.f)
			S 롤러 S Roller	R 롤러 R Roller		길이 Length	높이 Height H	두께 Thickness T						
			L ₁	L ₂					L ₃	L ₄				
HC 2040	25.40	7.95	7.94	15.88	3.97	8.20	9.90	-	-	12.00	1.50	-	16.7 (1,700)	2.65 (270)
HC 2050	31.75	9.53	10.16	19.05	5.09	10.30	11.90	-	-	15.00	2.00	-	27.5 (2,800)	4.31 (440)
HC 2060	38.10	12.70	11.91	22.23	5.96	14.55	16.10	-	-	18.10	3.20	-	40.2 (4,100)	6.28 (640)
HC 2080	50.80	15.88	15.88	28.58	7.94	18.30	21.90	-	-	23.00	4.00	-	68.6 (7,000)	10.7 (1,090)
HC 2100	63.50	19.05	19.05	39.69	9.54	21.80	25.60	-	-	30.10	4.80	-	108 (1,100)	17.1 (1,740)
HC 2040-2	25.40	7.95	7.94	15.88	3.97	-	-	15.53	17.07	12.00	1.50	14.40	33.4 (3,400)	4.5 (460)
HC 2050-2	31.75	9.53	10.16	19.05	5.09	-	-	19.48	20.92	15.00	2.00	18.10	55 (5,600)	7.35 (750)
HC 2060-2	38.10	12.70	11.91	22.23	5.96	-	-	27.60	29.15	17.20	3.20	26.20	80.4 (8,200)	10.7 (1,090)
HC 2080-2	50.80	15.88	15.88	28.58	7.94	-	-	34.55	38.15	23.00	4.00	32.60	137.2 (14,000)	18.1 (1,850)
HC 2100-2	63.50	19.05	19.05	39.69	9.54	-	-	41.30	45.10	28.60	4.80	39.10	216 (22,000)	29 (2,960)

(단위 UNIT : mm)

체인번호 Chain No.	어태치먼트 Attachment										체인 개략중량 (kg/m) Chain Approx. Weight	
	Dr	Cs	Xs	ℓ ₁	ℓ ₂	ℓ ₃	ℓ ₄	XsA	M	d	S 롤러 S Roller	R 롤러 R Roller
HC 2040	15.88	15.00	21.00	8.40	9.90	-	-	19.80	19.10	5.09	1.33	1.69
HC 2050	19.05	19.00	26.50	10.50	11.90	-	-	24.60	23.80	5.96	2.04	2.50
HC 2060	22.23	23.00	31.80	14.70	17.70	-	-	30.60	28.60	7.94	3.68	4.36
HC 2080	28.58	29.00	40.50	18.50	22.40	-	-	40.50	38.10	11.11	5.65	6.76
HC 2100	39.69	35.40	49.70	22.20	27.00	-	-	50.40	47.60	14.29	9.11	11.37
HC 2040-2	15.88	15.00	21.00	-	-	15.58	17.12	19.80	19.10	5.09	2.66	3.38
HC 2050-2	19.05	19.00	26.50	-	-	19.53	20.97	24.60	23.80	5.96	4.08	5.00
HC 2060-2	22.23	23.00	31.80	-	-	27.80	30.80	30.60	28.00	7.94	7.36	8.72
HC 2080-2	28.58	29.00	40.50	-	-	34.80	38.70	40.50	38.10	11.11	11.30	13.52
HC 2100-2	39.69	35.40	49.70	-	-	41.75	46.55	50.40	47.60	14.29	18.22	22.74

주 1) R-롤러 체인 사용시는 스프라켓에 주의하십시오.

2) 위 사양은 매링크 톱-롤러 타입이나 기타 특수사양도 생산하고 있으므로 문의하여 주십시오.

* 피로강도는 최대허용장력과 동일합니다.

The careful chain selection is required for R-Roller type chain

The special, typical and irregular dimension are available on demand

Fatigue strength is same as Maximum Allowable Tension